



SEPOR, INC.
 718 N. FRIES AVE.
 P. O. BOX 578
 WILMINGTON, CA 90748
 PHONE: 310-830-6601
 FAX: 310-830-9336

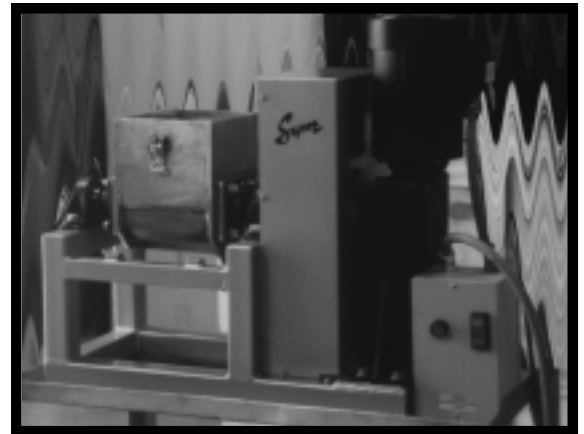
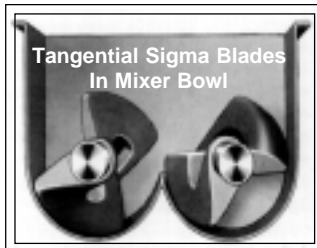
Double Shaft Sigma Blade Mixers

The Double Shaft Sigma Blade Mixer consists of two counterrotating blades in a rectangular trough, curved at the bottom to form two half cylinders and a saddle section. The blades are either direct driven or driven by means of a belt drive. Discharge is accomplished by tilting the bowl to discharge material. Mechanical discharge is used to tilt the small mixers, and hydraulic discharge is used to tilt the larger mixers.

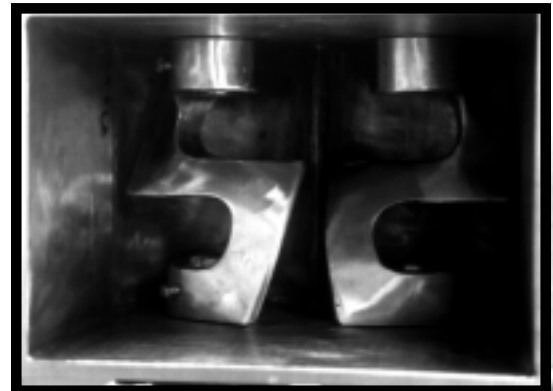
These mixers are very heavy duty for the high viscosity, difficult to mix material. Mixing action is accomplished by smearing, stretching, folding, dividing and recombining the material as it is pulled and squeezed against the sigma blades, saddles and walls of the trough. Our tangential sigma blade mixers have the sigma blades running at differential speeds, with the advantages of faster mixing resulting from the constant change of relative position of the material, increased wiped heat transfer area per unit volume and less material above the blades.

The sigma blade mixer is capable of mixing either wet or dry materials. The working volume of a sigma blade mixer is the volume from the bottom of the trough to the top of the blades. Refer to the tables below for capacities and horsepower requirements for our various sigma blade mixers.

Standard material of construction is stainless steel.



**Double Shaft Sigma Blade Mixer
 Shown In Working Position**



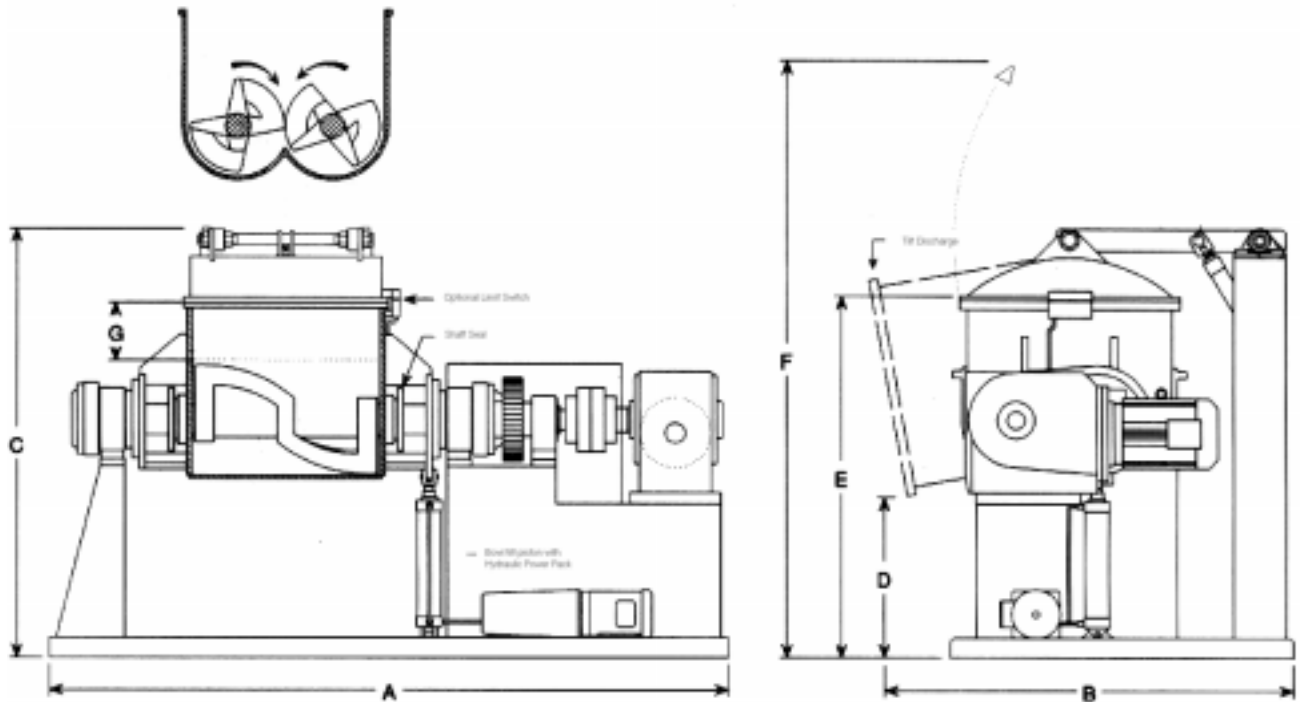
View Of Mixing Bowl

Sigma Blade Mixer Specifications

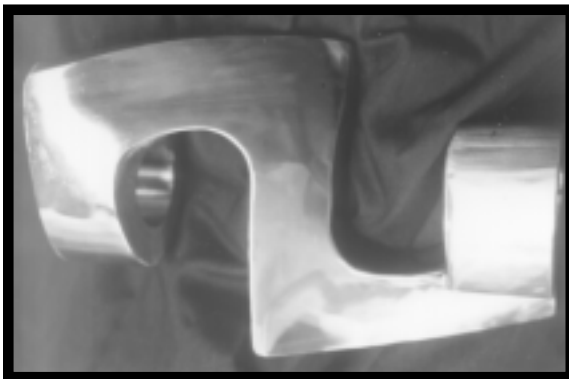
Catalog Number	Bowl Size (Gal.)	Mixing Cap. (Gal.)	Height (Max)	Floor Space (Apx.)	Motor HP	Shipping Weight (Lbs)
080G-001	1	1/2	12 In.	18" x 24"	1/2	290
080G-002	2	1	18 In.	24" x 33"	1	390
080G-003	4	2	20 In.	26" x 36"	1.5	575
080G-004	8	5	39 In.	30" x 60"	3	1,800
080G-005	20	10	46 In.	38" x 75"	5	3,100

Note: The 1 to 4 gallon bowl size mixers are bench top and have minimal discharge clearance. The mixers larger than 4 gallon bowl size have a minimum of 23 inches discharge clearance from the floor.

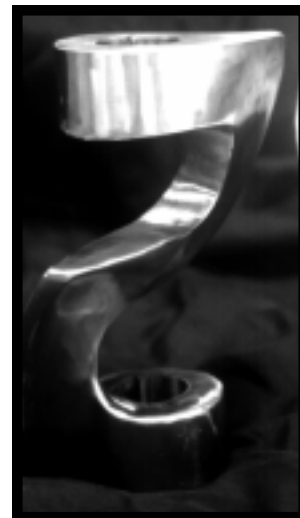
SIGMA BLADE MIXER TECHNICAL DATA/DIMENSIONS



Model No.	total volume gallons	working capacity	jacketed [1] surface area	standard HP [2]	blade speeds[3]		dimensions [inches] for reference only							shipping weight
					front	rear	A	B	C	D	E	F	G	
080G-001	0.8	0.5	0.8	0.75 to 2	73	49	24	18	12	2	10	10	1	250
080G-002	2	1	1.0	0.75 to 2	73	49	33	24	16	4	13	10	5	390
080G-003	4	2	1.6	0.75 to 2	59	39	36	26	20	6	17	23	6	550
Special	5	3	1.9	0.75 to 3	44	29	55	30	41	23	37	43	5	950
080G-004	8	5	2.8	1 to 3	44	29	60	30	41	23	37	43	6	1,800
080G-005	20	10	4.6	1.5 to 5	44	29	75	38	45	22	40	48	10	3,100



Single Sigma Blade



Sigma Blade

SEPOR, INC.
718 N. FRIES AVE.
P. O. BOX 578
WILMINGTON, CA 90748
PHONE: 310-830-6601
FAX: 310-830-9336