



SEPOR, INC.
718 N. FRIES AVE.
P. O. BOX 578
WILMINGTON, CA 90748
PHONE: 310-830-6601
FAX: 310-830-9336

MODEL CD CENTRIFUGAL PUMPS HORIZONTAL & VERTICAL

The CD100 Series of centrifugal pumps are economical pumps for pumping liquids or slurries containing solids with particle size less than 0.15" (3.8 mm). Depending upon the TDH, pump capacities range from 75 GPM (1" x 1-1/4") to 160 GPM (1-1/2" x 2"). The minimum flow for pump operation is 12 GPM (1" x 1-1/4") and 25 GPM (1-1/2" x 2"). These pumps feature a mechanical seal of buna, carbon vs. ceramic, compact close coupled design, grey cast iron construction or 316 stainless steel construction.

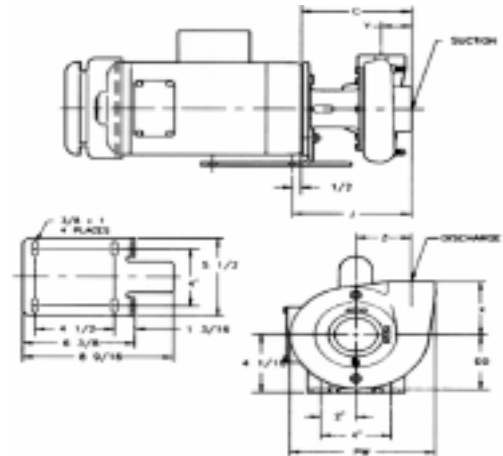
CD 100
 V
 E
 R
 T
 I
 C
 A
 L
 M
 O
 D
 E
 L



CD 100 HORIZONTAL CENTRIFUGAL PUMP



CLOSE COUPLED MODEL



For standard construction of a cast iron pump the volute, bracket and impeller are cast iron, fasteners are plated steel, the gaskets are synthetic fiber and the shaft is 303 SS. For the 316 stainless steel construction, the volute, bracket, fasteners and impeller are 316 SS. The gasket is Teflon and the shaft is 316 ss.

SEE REVERSE FOR MTD DRIVE DIMENSIONS

PUMP MODEL	PUMP DIMENSIONS						PIPE THREADS IN INCH		
	C	D	W	X	Y	Z	SUCTION	DISCHARGE	
CD 100-SS	8.500	3.125	1.750	8.500	1.500	2.500	8.500	1 1/2" NPT	1" NPT
CD 100-IR	8.500	3.125	1.750	8.500	1.500	2.500	8.500	1 1/2" NPT	1" NPT

Pump Model	Discharge/ Suction (In.)	Pump Speed (RPM)	GPM @ TDH	TDH (Ft)	Motor HP	Available Horizontal Or Vertical Configuration
CD-100	1"/1-1/4"	1750	30	18	1/2	Yes
CD-100	1"/1-1/4"	3450	60	72	2	Yes
CD-150	1-1/2" x 2"	1750	60	18	1/2	Yes
CD-150	1-1/2" x 2"	3450	120	72	5	Yes

Performance is for 60 Hz Motors Performance for 50 Hz is approximately 83%