



PRODUCT BULLETIN

SEPOR, INC.
718 N. FRIES AVE.
P. O. BOX 578
WILMINGTON, CA 90748
PHONE: 310-830-6601
FAX: 310-830-9336

Web Site: <http://www.sepor.com>

Type X Centrifugal Pumps

CENTRIFUGAL PUMP

Flows to 500 GPM
Heads to 300 ft.

MATERIALS OF CONSTRUCTION

XT - Threaded
Stainless Steel (316)
Cast Iron (Class 30)

MATERIALS OF CONSTRUCTION

XJ - Flanged
Stainless Steel (316)
XL - Flanged
Stainless Steel (316)

SIZES

Discharge X Suction X Max Imp.
XJ100- 1" x 1~1/2 x 8"
XJ150- 1~1/2 x 3" x 8"
XJ200 - 2" x 3" x 8"



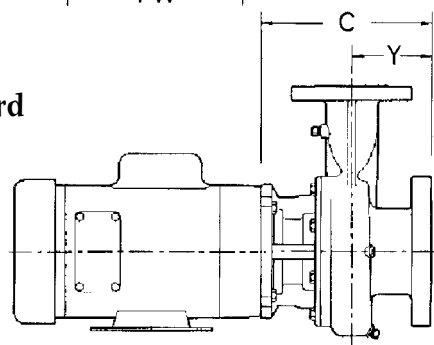
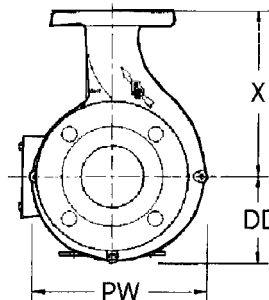
TYPE X CENTRIFUGAL PUMP

APPLICATIONS

- **INDUSTRY**—Chemical process, deionized water, water and wastewater treatment, hot solvents, caustics.
- **O.E.M**—Washers, filters, chillers, cooling towers, scrubbers, plating equipment,
- **AGRICULTURE**—Acid fertilizers and other agricultural chemicals

STANDARD FEATURES

- 150 lb. centerline ANSI dimensioned flanges standard
- Available NPI connections
- Close coupled through 30 hp
- Wide range of seal options, type 21 Viton standard
- Standard NEMA JM motors
- Replaceable shaft sleeve
- Back pull-out design
- ODP, TEFC, XP motors



PUMP END DIMENSIONS (Inches)					
MODEL	C	DD	PW	X	Y
030A-200	8 1/4	4 1/16	8"	6 1/2	4"
030A-210	8 1/4	4 3/8	8 3/8 "	6 1/2	4"
030A-220	8 5/8	5 1/16	10 1/16	6 1/2	4"
030A-030	8 5/8	5 1/16	10 1/16	6 1/2	4"

60 Hz

Sepoz

CURVE NUMBER: 6700054-78 MODEL: XIX Pumps SIZE: 1X1-1/2XB RPM: 3450
 IMPELLER DIA: VARIOUS MIN. IMPELLER DIA: 5.00 MAX. IMPELLER DIA: 8.00 MAX. SOLIDS: .12
 CUSTOMER: FPCO CUSTOMER'S P.O. _____
 REMARKS: 08-01-84 XJ100 - FLANGED PORTS

